

HOW TO LINK DELTA PLC WITH KEPSERVER AND EXCEL ?



HARDWARE/SOFTWARE REQUIRED:



Hardware:

- Delta PLC - DVP 12SE11R
- Power Supply 24VDC
- Ethernet Cable



Software:

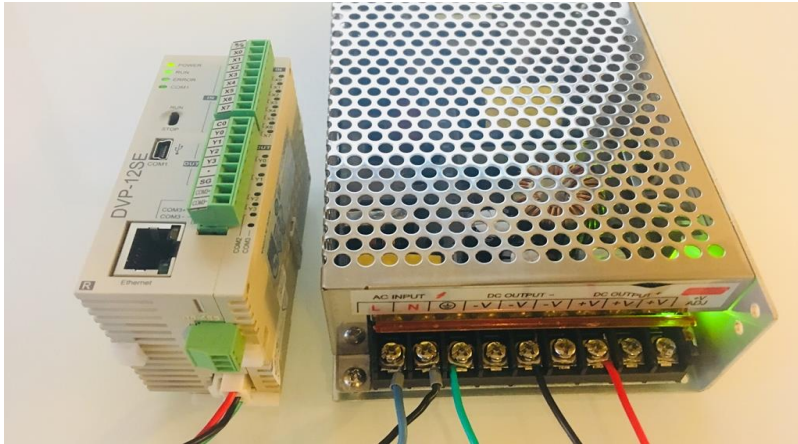
- ISP Soft - [PLC programming Software](#)
- Kepware server- [Download here](#)

HOW TO LINK DELTA PLC WITH KEPSERVER AND EXCEL?



Step- 1

Connect PLC with 24VDC Power supply



Step- 2

Connect ethernet cable connecting PLC and PC

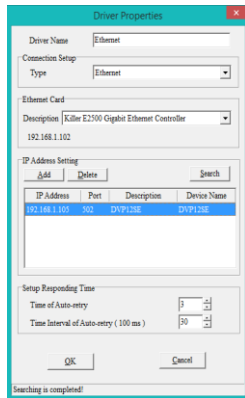


Recommended
Ethernet cable:
Cat5

HOW TO LINK DELTA PLC WITH KEPSERVER AND EXCEL?

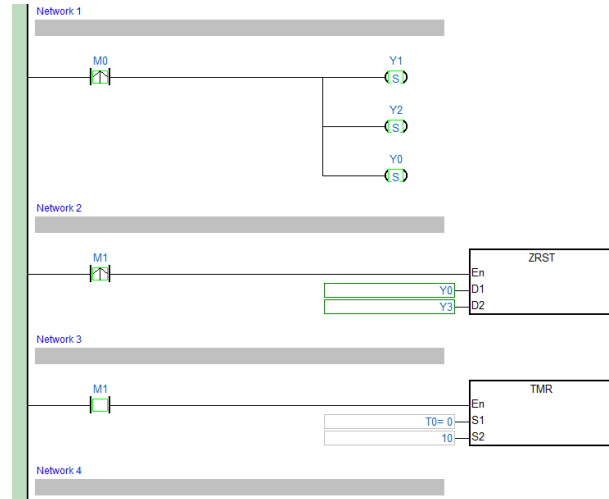


Step- 3 Configure PLC Network Settings



PLC IP Address:
192.168.1.102

Step- 4 Download PLC Program in PLC



PLC Software
used:
ISP Soft

HOW TO LINK DELTA PLC WITH KEPSERVER AND EXCEL?



Step- 5

Link the PLC with FACTORY I/O via MODBUS TCP/IP.

You can skip this step if you are not using FACTORY I/O



FACTORY I/O

← DRIVER Modbus TCP/IP Client DISCONNECT CONFIGURATION CLEAR

SENSORS

- At scale
- Emergency stop
- FACTORY I/O (Paused)
- FACTORY I/O (Reset)
- FACTORY I/O (Running)
- FACTORY I/O (Time Scale)
- Reset
- Start
- Stop
- Weight

Server: 192.168.1.105.502
Slave ID:1

Start	Coil 2048	Input 1280
At scale	Coil 2049	Input 1281
	Coil 2050	Input 1282
Stop	Coil 2051	Input 1283
	Coil 2052	Input 1284
	Coil 2053	Input 1285
	Coil 2054	Input 1286
	Coil 2055	Input 1287
	Coil 2056	Input 1288
	Coil 2057	Input 1289
	Coil 2058	Input 1290
	Coil 2059	Input 1291
	Coil 2060	Input 1292
	Coil 2061	Input 1293
	Coil 2062	Input 1294
Weight	Holding Reg 40	Input 1295
		Holding Reg 40

ACTUATORS

-
- Emitter
- Entry conveyor
- FACTORY I/O (Camera Position)
- FACTORY I/O (Pause)
- FACTORY I/O (Reset)
- FACTORY I/O (Run)
- Front conveyor
- Entry conveyor
- Load scale
- Remove
- Reset light
- Start light
- Stop light
- Weight

HOW TO LINK DELTA PLC WITH KEPSERVER AND EXCEL?



Step- 6

Configure the Kepware software to read/write PLC values

Add PLC in kepware

Property Editor - Delta 12SE.Delta PLC

Property Groups

- General
- Scan Mode
- Timing
- Auto-Demotion
- Tag Generation
- Variable Import Settings
- Unsolicited
- Error Handling
- Ethernet
- Settings
- Block Sizes
- Redundancy

Identification

Name	Delta PLC
Description	
Driver	Modbus TCP/IP Ethernet
Model	Modbus
Channel Assignment	Delta 12SE
ID	<192.168.1.105>.0

Operating Mode

Data Collection	Enable
Simulated	No

Name
Specify the identity of this object.

Defaults OK Cancel Apply Help

Define it's Tag addresses

Tag Name	Address	Data Type	Scan Rate	Scaling
DVP12SE_Y10	001291	Boolean	100	None
DVP12SE_Y9	001290	Boolean	100	None
DVP12SE_Y8	001289	Boolean	100	None
DVP12SE_Y7	001288	Boolean	100	None
DVP12SE_Y6	001287	Boolean	100	None
DVP12SE_Y5	001286	Boolean	100	None
DVP12SE_Y4	001285	Boolean	100	None
DVP12SE_Y3	001284	Boolean	100	None
DVP12SE_Y2	001283	Boolean	100	None
DVP12SE_Y1	001282	Boolean	100	None
DVP12SE_Y0	001281	Boolean	100	None
DVP12SE_M15	002064	Boolean	100	None
DVP12SE_M14	002063	Boolean	100	None
DVP12SE_M13	002062	Boolean	100	None
DVP12SE_M12	002061	Boolean	100	None
DVP12SE_M11	002060	Boolean	100	None
DVP12SE_M10	002059	Boolean	100	None
DVP12SE_M9	002058	Boolean	100	None
DVP12SE_M8	002057	Boolean	100	None
DVP12SE_M7	002056	Boolean	100	None
DVP12SE_M6	002055	Boolean	100	None
DVP12SE_M5	002054	Boolean	100	None
DVP12SE_M4	002053	Boolean	100	None
DVP12SE_M3	002052	Boolean	100	None
DVP12SE_M2	002051	Boolean	100	None
DVP12SE_M1	002050	Boolean	100	None
DVP12SE_M0	002049	Boolean	100	None
DVP12SE_D19	404116	Float	100	None
DVP12SE_D17	404114	Float	100	None
DVP12SE_D15	404112	Float	100	None

HOW TO LINK DELTA PLC WITH KEPSERVER AND EXCEL?



Step- 7

Make a database in Microsoft Access and link it to Kepware

Add a table in Ms Access Database

ID	Time_stamp	Value
565	10/12/2018 7:59:23 PM	750
566	10/12/2018 7:59:26 PM	250
567	10/12/2018 7:59:29 PM	399
568	10/12/2018 7:59:33 PM	400
569	10/12/2018 7:59:38 PM	250
570	10/12/2018 7:59:44 PM	500
571	10/12/2018 7:59:49 PM	150
572	10/12/2018 7:59:52 PM	500
573	10/12/2018 7:59:56 PM	350
574	10/12/2018 8:00:00 PM	149
575	10/12/2018 8:00:04 PM	500
576	10/12/2018 8:00:08 PM	400
577	10/12/2018 8:00:12 PM	500
578	10/12/2018 8:00:16 PM	249
579	10/12/2018 8:00:19 PM	500
580	10/12/2018 8:00:23 PM	349
581	10/12/2018 8:00:26 PM	750

Link it to Data logger. Define value to record and trigger

KEPServerEX 6 Configuration [Connected to Runtime]

Project: Connectivity > Channel1 > Delta 12SE > Delta PLC

Data Source Properties:

- Name: Excel
- DSN: MS Access Database
- Description:
- User Name:
- Password:
- Login Timeout: 10 (seconds)

Update rate: 100 milliseconds

Enabled

Store and Forward:

- Enabled
- Storage directory: D:\ProgramData\Kepware\KEPServerEX\6\Data\...
- Maximum storage size (MB): 10

Memory Properties:

- Maximum row buffer size: 1000
- Map Numeric ID to VARCHAR by default

Batch Identifier:

- Batch ID Item:

Data Type: Default

Update rate: 100 milliseconds

Timestamp Properties:

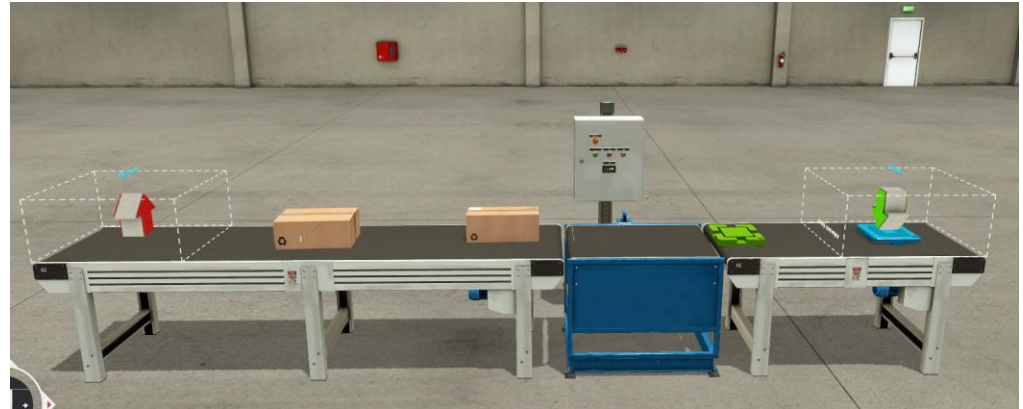
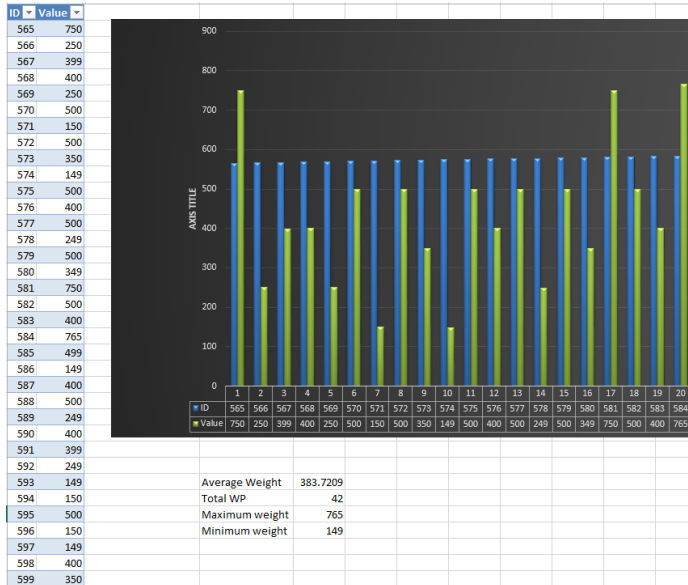
- Use local time for timestamp inserts (uncheck for UTC)

HOW TO LINK DELTA PLC WITH KEPSERVER AND EXCEL?

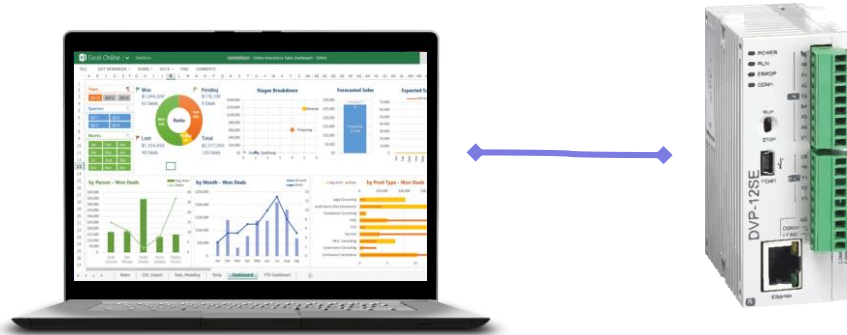


Step- 8

Link that database to Excel and test it!



ENJOY CODING :)



made with ❤️ by Rajvir